

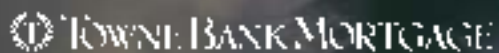
Oct. 19–Nov. 4, 2018 | weekends | Suffolk, VA

HOME *a* RAMA 18 PLANBOOK

AT THE
Creeks
OF NANSEMOND



PRESENTED BY



A Towne Banc Company



Thank you for making us **THE BEST!**

THE PILOT'S READERS' CHOICE AWARDS
BEST OF 2018 GOLD
VIRGINIA BEACH
CHESAPEAKE
NORFOLK

DREAM IT.
LIVE IT.
Love
it.
B&T
KITCHENS&BATHS
QUALITY DESIGN & CRAFTSMANSHIP

SHORE DRIVE DESIGN STUDIO 4429 Shore Drive Virginia Beach VA 23455 • 757.502.8625
CONTRACTOR SHOWROOM 3134 E. Princess Anne Rd Norfolk VA 23504 • 757.625.8400

www.bandtkitchens.com

hansgrohe

Metris Kitchen Faucet

BEST. DECISION. EVER.

When it comes to your dream home – making sure it is perfect means tons of tough decisions. Let our knowledgeable product experts relieve the stress and restore the fun while introducing you and your design team to our extensive collection of products from the most sought after brands.

Request your appointment today at fergusonshowrooms.com

FERGUSON
Bath, Kitchen & Lighting Gallery

WILLIAMSBURG | NEWPORT NEWS | VIRGINIA BEACH

FERGUSONSHOWROOMS.COM

©2018 Ferguson Enterprises, Inc. 0718 897056

TIDEWATER BUILDERS ASSOCIATION
HOME 18 RAMA *Creeks*

THE CREEKS AT NANSEMOND RIVER ESTATES
 SUFFOLK VIRGINIA

DOCK & PAVILION

PARKING



WE'VE GOT HOME FIELD ADVANTAGE

Local processing, underwriting, expertise and competitive products, delivered with exquisite customer service.



TOWNE BANK MORTGAGE

A Towne Family Company

NMLS# 512138

757-687-5000 | townebankmortgage.com





For more details visit www.homearama.tv

HOME ^aRAMA AT THE CREEKS OF NANSEMOND

PRESENTED BY TOWNE BANK | TOWNE BANK MORTGAGE
The Best Bankers. Homeowner Banking. A Towne Family Company.

Weekend Themes

October 19 – 21 events only on Saturday & Sunday

Military and First Responders Appreciation

50% Admission **Discount** (\$5 ticket) Active, Retired, Dependents (ID required)

Win Winslow will be playing Saturday, October 20, 1-5 p.m.

Hospitality Tent with non-alcoholic beverages and snacks, Noon-5 pm

Great prizes for Military & First Responders to win

October 26 – 28 events only on Saturday & Sunday

Bluegrass and Brews

Come out and enjoy **Bluegrass music by Fentress Station** while sampling **craft beer** and ciders (must have ID to sample)

November 2 – 4 events only on Saturday & Sunday

Family Fun Days

Luke Willette, Saturday, November 3, 1-5 p.m.

Cartoon characters, **face painting** and other activities

Santa Claus will be on site Saturday & Sunday, 1-4 p.m.



Live. Shop. Dine. Work. All in One Place.

1 & 2 Bedroom Luxury Apartments
Coming in Summer of 2019

PARK 216



3 Bedroom Homes from \$187,900
Stylish homes with open plans and
amenities - pool, clubhouse, tot lot & more.

CALL 757.276.7300 NOW

5113 Moreland Street Suffolk, VA 23434 (Corner of College Dr. and Hampton Roads Pkwy. near Harbour View)

www.terrypeterston.com
Sales by Rose & Womble Realty



It's a great time to buy a new home! | HOMEARAMA 2018 5



Welcome to Homearama!



BY LES ORE, HOMEARAMA CHAIR

Homearama celebrates its 36th anniversary at The Creeks of Nansemond in Suffolk. This annual traditional Homearama is a single-site event highlighting custom-built, professionally decorated and beautifully landscaped homes. All Homearama homes reside on spacious half-acre lots.

This year's Homearama's features the work of these custom builders: Black Tip Associates, Breland Builders, Brooks Enterprises, Eagle Construction of VA, East Coast Development and Ore Builders. Home prices range between \$450,000 and \$600,000.

The first weekend, October 19 - 21 we salute first responders and our military with a 50 percent discount on admission Friday, Saturday and Sunday. Military visitors are invited to take it easy in a special tent with complimentary beverages and snacks. They also will have the opportunity to win various prizes.

Bluegrass and Brews is the theme for the second weekend, October 26 - 28. From 1 to 4:30 p.m. on Saturday and Sunday, guests are invited to sample a variety of craft beers while listening to some down-home bluegrass music performed by local artists.

On Saturday and Sunday of the final weekend, November 2 - 4 our focus is Family Fun Days, featuring costumed characters, face painting and lots of activities for the children. It's been rumored that Santa Claus will be there on Saturday and Sunday from 1 - 4 p.m.

The Creeks of Nansemond is the perfect place to visit for a fall adventure. The neighborhood features large interior and waterfront lots, plus a dock and pavilion for families to enjoy fishing and picnics. This community is conveniently located to I-664, Route 17/Harbor View and Route 58. A dog park is coming soon. Sleepy Hole Golf Course is two miles away.

As Homearama 2018 chair and on behalf of our custom builders and Tidewater Builders Association, I am extremely proud to welcome you to this event. Please enjoy browsing Homearama homes at The Creeks of Nansemond and experience local country living at its absolute finest.

And remember, home furnishings and furniture in the Homearama homes will be for sale during the event and can be picked up at the close of the show.

Visit the show website for a complete schedule and details at www.homearama.tv

Friends and neighbors

TBA members help build a better community



BY SCOTT GANDY, 2018 TIDEWATER BUILDERS ASSOCIATION PRESIDENT

Chances are good you have a friend or neighbor who's a member of Tidewater Builders Association. You might even be a member yourself.

Because the folks who belong to this local professional trade association are more than just builders, developers and remodelers; they are plumbers, electricians, bankers, real estate agents, interior designers, apartment managers... the list goes on.

Together, they are the strength behind a local organization that was founded 65 years ago to advocate for affordable housing and provide business and educational opportunities to its member firms.

TBA also helps educate area residents on what's new and exciting in housing through its Homearama single-site and Touring Edition events, as well as the annual Mid-Atlantic Home & Outdoor Living Show, scheduled in 2019 for March 23-24 at the Virginia Beach Convention Center.

Although TBA is a trade association with a business purpose, it also has a philanthropic side.

The association established a scholarship foundation in 1965 and has given close to \$1.8 million in financial assistance to 446 local students; students who might otherwise have been unable to attend college. This assistance comes through two programs: an academic scholarship program and an architectural design competition.

There will be six \$5,000 academic scholarships awarded in 2019 and applications will be available in November from all local high school guidance offices, as well as on the TBA website (www.tbaonline.org). The application deadline is March 1st.

Criteria for the Young Designers' Scholarship Competition has already been sent to all high school drafting departments and guidance offices. Although this competition is open to any high school student enrolled in public or private high school in South Hampton Roads, applicants typically work on their design entries as part of a class assignment. The 2019 competition deadline is May 10. Visit www.tbaonline.org for the criteria and a look at past winning entries.

TBA and its members have also been instrumental in raising funds over the years for local charities like Children's Hospital of the King's Daughters, Boys & Girls Clubs of Southeast Virginia and St. Mary's Home for Disabled Children.

Want to learn more?

For more information about TBA and its many programs and activities, visit www.tbaonline.org

And if you work in the industry and you're interested in becoming part of this dynamic group, please contact TBA's membership director, Betty Axson, at baxson@tbaonline.org for information on joining.



We make no apologies for looking like an expensive furniture store.

FACTORY DIRECT PRICING



LOCALLY OWNED



FREE DESIGN SERVICES



30-50% OFF EVERY DAY

But we're not.

Even though you'll find us in some of the best designed homes at Homearama, we have furniture that fits every lifestyle and budget, at prices that will make you take a second look. We buy direct from the source and pass the savings on to you. Stop by one of our three locations and see for yourself.



980 Laskin Road, Virginia Beach | 819 Granby Street, Norfolk | Milepost 8.5 on the Outer Banks | exoutlet.net

2018 CORNERSTONE FOUNDATION

Many thanks to the following companies
for their generous support of the shelter industry:

LEGACY • \$50,000

Kempsville Building Materials

DIAMOND • \$35,000

**TowneBank/
TowneBank Mortgage**

GOLD • \$10,000

**Cox Communications
Dominion Energy**

SILVER • \$5,000

**Atlantic Bay Mortgage Group
Centricity
Closet Factory
Columbia Gas of Virginia
The Dragas Companies
Ferguson Bath, Kitchen
& Lighting Gallery
Frye Properties Inc.**

**Hearndon Construction Corp.
Kotarides Builders
The Lawson Companies
Napolitano Homes
Sasser Construction L.C.
Tidewater Home Funding
Virginia Natural Gas
Wells Fargo Home Mortgage**

BRONZE • \$2,500

84 Lumber Company	Builders First Source	Howard Hanna	Sadler Building Corp.
ABT Custom Homes	C&F Mortgage Corporation	William E. Wood Realtors	Stephen Alexander Homes & Neighborhoods
Ainslie Group Inc.	Cedar Creek LLC	James Hardie Siding Products	Sykes, Bourdon, Ahern & Levy
Andersen Windows & Doors	Chesapeake Homes	JELD-WEN	The Terry/Peterson Companies
Ashby Development	Christopher Kait Construction	Windows & Doors	Trex Company
Associated Development Management Corp.	Clark Whitehill Enterprises	Joey Corp.	U.S. Lumber
Atlantic Forest Products	Diamond Hill Plywood	Kirbor Homes	United Window & Door Manufacturing
Atlantic Foundations	Dragas Mortgage Company	Kroll Enterprises	VB Homes Design Build LLC
BB&T	The ESG Companies	MI Windows and Doors	Virginia Commonwealth Bank
Beach Ford	Fulton Bank/Fulton Mortgage	Movement Mortgage	The Widener Corporation
Berkshire Hathaway Home Services Towne Realty	George Mason Mortgage	Nansemond	Williams Mullen
Bishard Homes	L.R. Hill Custom Builders	Pre-Cast Concrete	Wilmik Inc.
		Oceanside Building	
		Parkside	
		Rose and Womble Realty Company	
		Ryan Homes	

TIDEWATER BUILDERS ASSOCIATION LEADERSHIP

Executive Committee:
Scott M. Gandy, president
Patrick L. Reynolds, vice president
Roland L. "Les" Ore Jr., treasurer
Patrick L. Norton, secretary
Jeffrey L. Bruzzesi, appointee
Lana L. O'Meara, appointee
Christopher Ryan Rose, appointee
Jeffrey M. Tourault, appointee
Douglas C. Smith, immediate past president
Claudia K. Cotton, CEO/government relations
Joyce F. Hearn, chief operating officer

Elected Builder Directors:
Steven W. Bishard, Robert A. Deacon,
Christopher J. Ettel, Cody R. Hastings,
Andrea M. Kilmer, Basil O. Kotarides,
Lana L. O'Meara, Tara T. Preston,
Stephen B. Quick IV, Eric B. Shirey

Elected Associate Directors:
Laura M. Arcand, Jeffrey L. Bruzzesi,
Sandra C. Canada, Kim S. Curtis,
Emily A. Farley, James R. Ferber,
Dianne S. Gordonn, Connor M. McNulty,
Lisa S. Parker, Robert J. Sampere,
Shirley B. Sasser, R. Steve Tinkham

TBA Housing Hall of Fame:
Jeffrey W. Ainslie, John W. Ainslie Jr.,
Richard L. "Tuck" Bowie,
Ramon W. Breeden Jr., S.L. "Sam" Cohen,
William J. Fannery, Paul J. Farrell,
Scott M. Gandy, Lawrence J. Goldrich,
Richard D. Guy, William H. Halprin,
Larry R. Hill, Doyle E. Hull,
John W. "Chip" Iuliano III,
Pete A. Kotarides, Robert A. Lawson,
Frederick J. Napolitano Sr.,
Frederick J. Napolitano II,
John C. Napolitano, Vincent A. Napolitano,
Michael D. Newsome, John E. Olivieri,
John H. Peterson Jr., Michael P. Rashkind,
Edward R. Sadler, Albert E. "Albie" Viola,
Howard M. Weisberg,
Jeffrey J. Wermers, Lyle G. Wermers,
Wendell A. White, Robert A. Widener,
Donald L. Williams

TBA HOMEARAMA/HOME SHOWS & SPECIAL EVENTS

Teresa Howell, staff vice president
Shelly Beck, graphic designer
Tammy Nobles, sales & production administrator
The Addison Group, web designer
The 2018 Homerama homes have been built for sale. Builders voluntarily participate and do not receive any revenue generated by ticket sales. The house renderings and floor plans are based on the existing model home.
All information in this publication was correct as of press time.

Discover Suffolk's small town atmosphere, quirky shops, award-winning eateries, guided tours, weekly events and so much more. Plan your weekend adventure at VisitSuffolkVa.com or call us at 757.514.4130.

[f](#) [t](#) [i](#) [p](#) /VisitSuffolkVA



With over 430 square miles, Suffolk is Virginia's largest city. The broad boundaries allow ample space for new families, loft-dwellers, busy young professionals, retirees and everyone in between. People continue to recognize all that Suffolk has to offer—the most recent population calculations again rank Suffolk as one of the fastest growing in Hampton Roads and the state of Virginia. Last year approximately 92,533 people called Suffolk home. Much of the growth in Suffolk has been in response to the positive business climate, central location, quality of amenities and high standard of living. With \$800 million dollars of capital investment and over 8,000 jobs created in the past seven years, it is clear to see many people are saying "Yes" to Suffolk.

During 2017 a total of 48 new businesses selected Suffolk to grow their businesses. The new businesses invested over \$37 million dollars and hired approximately 587 new people. Existing industries re-investing in their own operations in order to improve operations is a very important measurement of economic development tracking as well. During 2017, 46 already-established Suffolk businesses spent over \$77 million dollars in expansions, upgrades, renovations, new equipment and other types of improvements.



The primary industry sectors in Suffolk are: office and administration, medical, technology—modeling and simulation, advanced manufacturing, distribution, hospitality and retail. Just in 2017 alone over 700 new jobs were created thanks to the investment of Suffolk industries.

A fresh focus on Downtown Suffolk was recently revealed with the new Downtown Master Plan. The new initiative was created with input from city leaders, business and property owners, citizens and commercial planning professionals in order to enhance the revitalization efforts of the Downtown corridor. Anticipated improvements such as increased pedestrian—walkable spaces, a new library square, a Festival and Market Square and the creation of a mixed-use residential and reuse development all contribute to the plan's vision of renewing the historic district.



TO LEARN MORE ABOUT SUFFOLK'S MAJOR EMPLOYERS, DEMOGRAPHICS, SMALL BUSINESS ASSISTANCE AND MORE, GO TO YESSUFFOLK.COM OR CONTACT THE SUFFOLK ECONOMIC DEVELOPMENT DEPARTMENT AT 757.514.4040.

[f](#) [t](#) [i](#) [p](#) /YesSuffolk



YesSuffolk



Visitors quickly see why so many have chosen to call Suffolk home

Suffolk enjoys modern amenities and industry alongside a strong sense of community with deep historical roots.

We are proud of how our City has evolved from its humble beginnings in peanut processing into a savvy technological hub for 21st century progress.

The City of Suffolk is Virginia's largest city and one of the top fifteen largest cities in land area in the nation, with 430 square miles of land and 30 square miles of waterways.

With such ample natural resources, our close proximity to highway and interstate systems and robust business climate, we continue to attract new residents to enjoy living, working and playing within the City boundaries. In fact, Suffolk's population is the fastest growing in Hampton Roads and one of the fastest growing in the state.

As the City continues to attract new residents and businesses, we are keenly aware of the need for City programs, access to quality health care and convenient access to schools. In fact, opening for the 2018-2019 school year are a new elementary school and a new middle school. Other capital improvement projects include the construction of a new recreational center, road expansions, walking trails and waterway access and kayak launches. Planning initiatives for our exciting new Downtown Master Plan are underway. Every day, every year, our goal is for our residents and businesses to be inspired.

Another important aspect to be considered with the increase in citizens is the availability of suitable and affordable homes in a range of price points in safe neighborhoods. Suffolk is well-positioned to offer a fine mix of historic homes, urban loft lifestyles, family-friendly neighborhoods and convenient multi-family options. New facilities have opened designed to provide for senior living needs, and first time homeowners can find a variety of picturesque single-family housing styles. Our motto is "YesSuffolk" because there truly is something for everyone here.

We have been proud to host and be a part of Homearama in past years, attended by thousands of people who discover and explore the many new and attractive characteristics of our City. The Creeks of Nansemond is a wonderful example of a unique livable community. No matter what your taste or design preference is, you can find your dream home and lifestyle in Suffolk. We hope you enjoy Homearama 2018 and all that Suffolk can offer you.

Linda T. Johnson, Mayor,
City of Suffolk

Linda T. Johnson

The Suffolk House

1



2,990 sq ft 5 3.5 2



House Highlights

- Master downstairs
- Open floor plan
- Trane split system/heat pump system (HVAC) provided by Absolute Comfort
- Child safety, Alexa programmed, custom window treatments provided by Budget Blinds
- Upgraded interior trim and tile

Architectural Style
Craftsman ranch

Architectural Design
Mayfield Designs
(757) 547-2191

Interior Design
Melissa Moon,
Moonscape Properties LLC
(757) 251-8252

Furnishings
Carter Furniture Inc.
(757) 539-3355

Technology
Audio Wiring
Spartan Pro Tech
(757) 517-3896

Sales
Mike Zimmerman,
RE/MAX ULTRA
(757) 390-7303

Financing
Chaytor Midgett,
C&F Mortgage
(757) 705-9015



Ore Builders, LLC Les Ore & Amy Ore Gwin

Ore Builders, LLC is a family owned business experienced in new construction priced from the mid-200's to 2 million dollar homes, selling between 25-30 homes a year. Ore Builders is experienced, stable, dependable and reliable. Outstanding customer service and a strong sense of teamwork are fundamental to our building process.

phone: (757) 652-2434 | website: www.orebuilders.com
mail: Les.Ore@OreBuilders.com



FIRST TEAM



Forever

FOREVER STARTS NOW WITH FIRST TEAM



HOME ¹⁸ RAMA *Creeks*
OF NANSEMOND

PRESENTED BY TOWNE BANK | TOWNE BANK MORTGAGE

www.FirstTeamAuto.com

Your home, your way.

Since most new construction buyers are overwhelmed with the details, HOME 757 provides the know-how to make your experience smooth and affordable.

- Custom home plans available or bring your own plans and ideas
- Large lots available from 1/2 - 2 acres... including waterfront lots!

HOME 757 is your *Homearama* expert for this year's show at *The Creeks of Nansemond*. The featured neighborhood is full of family surprises, such as a community picnic area and floating dock. We also offer **TRANE** HVAC in all of our homes. Let **HOME 757** get you started by offering closing cost assistance with a preferred lender.

Our custom homes are built by some of the 757's top builders:

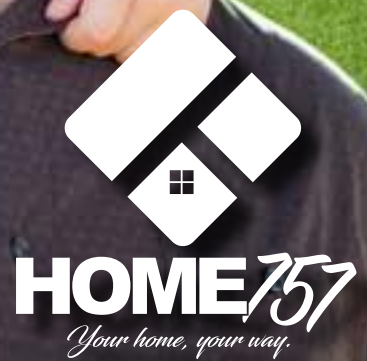
Ore Builders	Brooks Enterprises
Black Tip Associates	Breland Builders
Eagle Construction	East Coast Development

Schedule your **FREE** Home Discover Consultation.

Call Mike Zimmerman (757) 390-7303 and visit www.home757.com.



RE/MAX
ULTRA



SENTARA IN YOUR COMMUNITY

Sentara Healthcare has been serving the residents of Suffolk and surrounding communities—in one form or another—since 1950. From its original incarnation as the Louise Obici Memorial Hospital to its current partnership with Sentara, the hospital has stayed true to its mission to offer quality care to all residents.

But high-quality healthcare isn't the only legacy its benefactor, Amedeo Obici, left behind. For more insights into the colorful history and progress of the hospital, we spoke to Dr. Steve Julian, president of Sentara Obici Hospital.



Dr. Steve Julian
President of Sentara Obici Hospital

Sentara Obici Hospital has a unique history. How did it get its start?

"Amedeo Obici was an Italian immigrant who arrived in the U.S. when he was nine years old. When he got off the boat, he was met by his cousin Louise, who he eventually married.

Obici was a mechanical genius and a smart business man. He started off by inventing a new peanut roaster and built his peanut business into the company that would ultimately be called Planters Peanuts. When he died in 1947, he left several bags of money. The largest one, containing about 8 million dollars, was to be used to start a hospital that would treat all people (at the time, hospitals were segregated). He also stipulated that both he and his wife be buried in a mausoleum in the hospital. I Googled it, and we're the only hospital where the benefactor is buried on site!"

What has changed as a result of the partnership with Sentara?

"In 2002, a new, more modern hospital was built (and the Obici's mausoleum moved to the new location). But things really took off in 2006 when Obici merged with

Sentara to become Sentara Obici Hospital. We've grown tremendously and now have three campuses—the main location, plus Sentara BelleHarbour in North Suffolk and Sentara St. Luke's in Isle of Wight. We've added dozens of programs and services along with more high quality providers and other staff. Thanks to this partnership, we've been able to infuse the hospital with over \$150 million in upgrades, technology and programs to better serve all of our patients."

How does Sentara partner with Suffolk and the surrounding communities to improve health every day?

"Our hospital admits 11,000 patients and sees over 40,000 in the Emergency Room per year. We also support several outreach programs that help provide health services to thousands of people beyond the hospital. Sentara Obici Hospital provides about \$5 million in free medical care to those who use the Western Tidewater Free Clinic. And Sentara has contributed to the independent establishment of an endowment with the Obici Healthcare Foundation. We work with them through their generous grants to benefit the less fortunate in our community as well as coordinate strategies for the overall enhancement of the health of those living in their designated service area."

What do you enjoy most about working at Sentara?

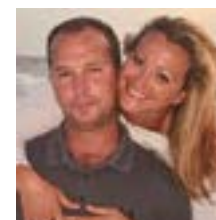
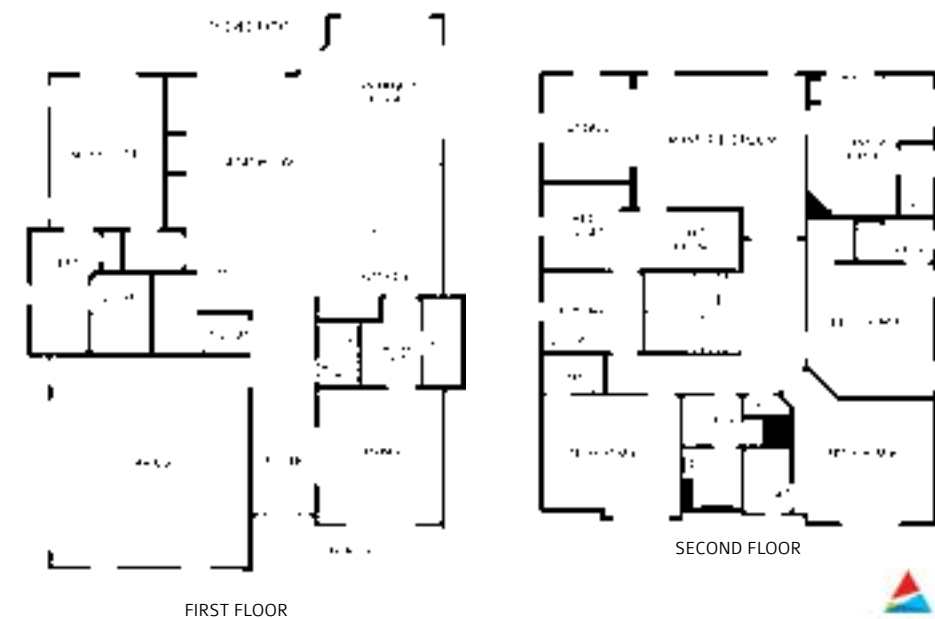
"Sentara Obici Hospital is a 178-bed hospital, which is not small, but it's a size you can really get your hands around. I know all of the nurse managers and many of the staff by name. It's the sort of place where people greet each other and take the time to get to know each other. And since it's a small community, our staff is often taking care of patients who are their friends, family or neighbors. I routinely make rounds to check on patients and staff because I feel like every one of these patients is ultimately my responsibility. And I love working with my staff, hearing their feedback and ideas and being able to use that information to constantly work toward making this a better hospital."



The Blakley



3,600 sq ft 5 5 2



East Coast Development Group, Inc | Joe Benton

Joe started in construction as a summer job doing vinyl siding. He continued working while finishing college and eventually became a general contractor. He developed a passion for giving new life to homes and helping to make his customer's vision come to life.

Each and every project is completed with the same care, determination and extreme precision as the next. Each house is

built like his family would live there. His journey has taken him from helping the first time homebuyer that never thought they would own a new home to 10 million dollar commercial projects in Afghanistan. He has unlimited GC license in North Carolina and Virginia.

phone: (757) 633-5864 | website: eastcoastdevelopmentgroup.com
email: eastcoastconstruction05@gmail.com

2

House Highlights

- Stone/granite pavers
- Outdoor fireplace and firepit
- First floor junior master suite
- 10' ceilings on first floor
- Stone farm sink, wet bar and shaker cabinets
- Live edge counter top
- Butler's pantry & wine rack
- Master closet by Closet Factory
- Blinds by Budget Blinds
- Farm door accents throughout
- Reclaimed wood
- Smart home security & automation system integrated with Amazon Alexa voice control

Architectural Style

Modern farmhouse

Architectural Design
Wayne Barnes,
Barnes Residential Designs
(757) 567-4398

Interior Design
East Coast
Development Group

Furnishings
Instantly Inviting Home
Staging Solutions,
(757) 515-4802

Value City Furniture

Landscaping
Albemarle Irrigation
(252) 338-5831

Technology
Scott Twine, Johns Brothers
Security (757) 852-3300

Sales
Debbie Rountree
andAudra Benton,
Rose and Womble Realty
(757) 648-0999

Financing
Chaytor Midgett,
C&F Bank & Mortgage
(757) 705-9015

HOT

PRODUCT

XV20i TRUCOMFORT™

TEST

SYSTEM EXTREME ENVIRONMENTAL TEST

DESCRIPTION

TO SIMULATE 5 YEARS OF ENVIRONMENTAL EXPOSURE, WE PUT OUR PRODUCTS THROUGH EXTREME TEMPERATURE FLUCTUATIONS INSIDE THE SEET LAB—PUSHED BEYOND WEATHER SEEN ANYWHERE IN NORTH AMERICA. WE TEST, SO IT RUNS.

COLD

TESTED FOR EVERY EXTREME.

www.TraneInfo.com



It's Hard To Stop A Trane.



A Division of the Carter Lumber Company

Kempsville Building Materials is a leading provider of quality building materials for single/multi-family home building, remodelers, small commercial building, and do-it-yourselfers.

We pride ourselves on our customer services, quality products and meeting your building needs the first time. Whatever your project requires, we can help you complete it.



Chesapeake

3300 Business Center Dr S
Chesapeake, VA 23323
(757) 485-0782

Newport News

814 Chapman Way
Newport News, VA 23608
(757) 875-1850

Ashland

12144 Washington Hwy
Ashland, VA 23005
(804) 798-1514

Virginia Beach

1752 Virginia Beach Blvd
Virginia Beach, VA 23454
(757) 962-8650

Elizabeth City

109 Impact Blvd
Elizabeth City, NC 27909
(252) 264-2323

Point Harbor

8917 Caratoke Hwy
Point Harbor, NC 27964
(252) 491-2436

Chester

14500 Jefferson Davis Hwy
Chester, VA 23831
(804) 295-5230

Buxton

47371 Buxton Back Rd
Buxton, NC 27920
(252) 995-4441

Raleigh

298 Harvey Faulk Rd
Sanford, NC 27332
(919) 775-1450

kempsvillebuilding.com



Every dream home begins with natural gas

Nothing says welcome home like the comfort of natural gas.

Did you know, according to a recent survey, homebuyers prefer natural gas nearly three to one? In fact, the National Association of Homebuilders reports that homes with natural gas have, on average, a 6 percent higher resale value.

For maximum comfort, make sure your plans include efficient natural gas appliances. It's the most reliable and affordable way to heat your home.

- ✓ Natural gas appliances
- ✓ Furnaces
- ✓ Water heaters
- ✓ Ranges
- ✓ Fireplaces
- ✓ Grills
- ✓ Outdoor lights
- ✓ Clothes dryers
- ✓ Generators

virginiannaturalgas.com/switch

844.449.9244

© 2018 Southern Company. All rights reserved. Do not reuse text or graphics without written permission. VNG-17800



HOME ASSOCIATES OF VIRGINIA, INC.

Building Places You're Proud to Call Home



HICKORY LANDING at Edinburgh



Hickory Landing at Edinburgh ~ From the \$370s

Located in the Hickory area of Chesapeake, these new homes feature 3-6 bedrooms with your choice of traditional or craftsman-style elevation in a walkable community with fountain sprayed lakes. Take Exit 8A off the Chesapeake Expressway (Rt. 168). Turn right on Hillcrest Pkwy., then left onto Edinburgh Pkwy. Entrance is 2 miles further on your left.

www.HAVInc.com
Dee Maltese | 757.478.7812
HAVSales@HAVinc.com

Committed to quality construction and customer satisfaction, HAV builds new homes with a strong attention to detail and superior craftsmanship. Our focus is to design homes for the way you want to live, with open floor plans and popular options. Contact us today for more information on our homes and lots now selling in Virginia Beach and Chesapeake. www.havinc.com | 757.431.1481





Buying a home?

Talk to the local Mortgage Experts.

At Dollar Bank, we've made it our business to be the local mortgage experts. And, our only focus is to provide you with the right loan that meets your financing needs. We also keep the servicing of our mortgages and will be there for you long after closing.

- Same day pre-qualification
- Fixed Rate, Adjustable Rate, Jumbo, Construction to Perm and FHA Mortgages
- VA Mortgages with no down payment up to \$458,850
- Low rates and fees

Talk to a Mortgage Expert today!



Jennifer N. Taylor
Sr. Mortgage Representative
Residential Lending
NMLS: 265426
757-300-LOAN (5626)
jtaylor610@dollarbank.com



Milton E. Twisdale
Sr. Mortgage Representative
Residential Lending
NMLS: 116878
757-451-4015
mtwisdale511@dollarbank.com



Jaison Wojdyla
Assistant Vice President
Residential Lending
NMLS: 135312
757-406-8196
jwojdyla258@dollarbank.com

Equal Housing Lender. Member FDIC. Copyright © 2018, Dollar Bank, Federal Savings Bank.

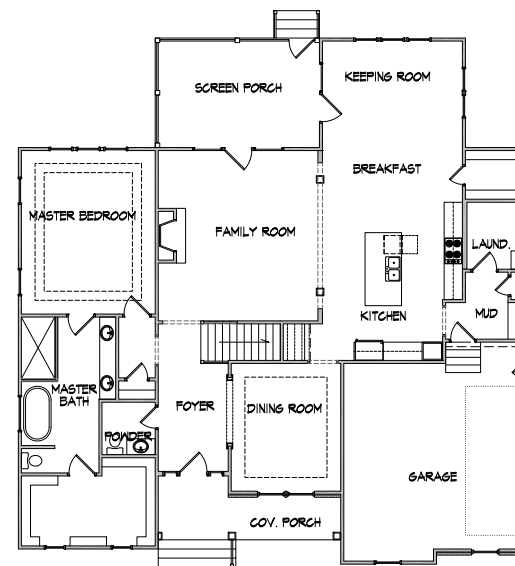
MOR572_18

The Sydney Dianne

3



3,200 sq ft 4 3.5 2



FIRST FLOOR



SECOND FLOOR



Breland Builders, Inc. | Shaun Breland

With 25 years of experience in residential construction, Shaun Breland, President of Breland Builders, Inc. prides himself on quality, craftsmanship, and customer service. Over 20 years ago, Shaun went to school to pursue a career in architecture, but preferred the hands on approach of building instead. By learning every aspect of the building process, Shaun has been able to educate his clients and assist them with the best design decisions for their lifestyle. Whether it's your dream home or dream renovation, Breland Builders will be there assisting you from design to completion. Shaun lives by a principle that was taught to him as a child, "If you are going to do something, then do it right."

phone: (757) 818-0040 | website: brelandbuilders.com | email: brelandbuilders@gmail.com

House Highlights

- Large open floor plan with two story foyer
- Downstairs master with spa bath and large walk in closet
- Gourmet kitchen with custom cabinets, walk in pantry and professional appliances
- Hickory hardwood flooring throughout first floor
- Custom trim work with coffered ceiling in living room
- Keeping room with vaulted ceiling off kitchen
- Large covered porch with custom see through fireplace
- Whole house audio and smart house integration features
- Upstairs loft flex space
- Over 1,000 square feet walk in storage

Architectural Style
Traditional Craftsman

Architectural Design
Tim Mayfield, Mayfield Designs
(757) 547-2191

Interior Design
Tiffany Day, Exotic Home
Coastal Outlet (252) 202-8769

Furnishings
Mike Day, Exotic Home
Coastal Outlet (252) 202-8769

Diane Wand, The Velveteen
Rabbit (757) 483-0750

Landscaping
Mike Smith, Proturf
(757) 478-4984

Technology
Mark Wilging, Coastal Security
Home Automation
(757) 453-6900

Sales
Jim Ethridge, The Ron Sawyer
Team, Remax Prime
(757) 633-7102

Financing
Phil Smith, TowneBank
(757) 391-3528

RSVP

High Impact
Direct Response



Reaching
Affluent Homeowners
Where they Live!

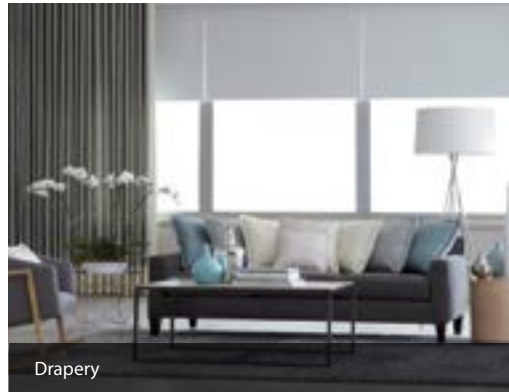
- Qualified Leads
- Stronger Conversion
- Higher ROI

Laura.RSVP@hotmail.com
RSVPHamptonRoads.com
757-788-9205



HOME-A-RAMA 2018 SPECIAL: 20% off MSRP ON BLINDS AND SHADES

excludes shutters and motorization



Drapery



Cellular Shades



Faux Wood Blinds



Shutters

BUDGET[®] BLINDS

Style and service for every budget.[®]

Call for your free in-home consultation today!

757-356-9996

Chesapeake
Suffolk
Virginia Beach
Eastern Shore
Outerbanks
Isle of Wight

1025 Executive Blvd., Suite 104
Chesapeake, VA
budgetblinds.com/chesapeake

CLASS A CONTRACTOR SINCE 1988

houzz BBB TBA

The quality is in the details

We offer 3D designs. Schedule a FREE consultation

757-651-3285 • kmcashremodeling.com

BAY DISPOSAL & RECYCLING
857-9700

BAY DISPOSAL & RECYCLING is a waste and trash management, waste disposal, junk removal and recycling services provider proudly serving both businesses and residential communities throughout the Hampton Roads and northeastern North Carolina regions.

(757) 857-9700 | POWELLS POINT, NC | PENINSULA, VA | HAMPTON, VA | NORFOLK, VA | COROLLA, NC

Habitat for Humanity[®]
South Hampton Roads

We're a proud member of TBA!

WWW.SHRHABITAT.ORG
757-640-0590

Coastal Door Installations Co.
A DIVISION OF COASTAL DOOR SUPPLY INC.

STRONGEST WARRANTIES IN THE INDUSTRY

546-3712

STORM DOORS
ENTRY DOORS
PATIO DOORS
SECURITY DOORS
WINDOWS
RETRACTABLE SCREENS

\$25 OFF STORM DOOR
\$100 OFF ENTRY DOOR

ProVia ACCREDITED BUSINESS



From our homes to our process, everything is designed with you in mind. With a personalized design experience, high-performing energy efficient homes and the Eagle Advantage Home Warranty, we are committed to our customer experience. Because what matters to you, matters to us.

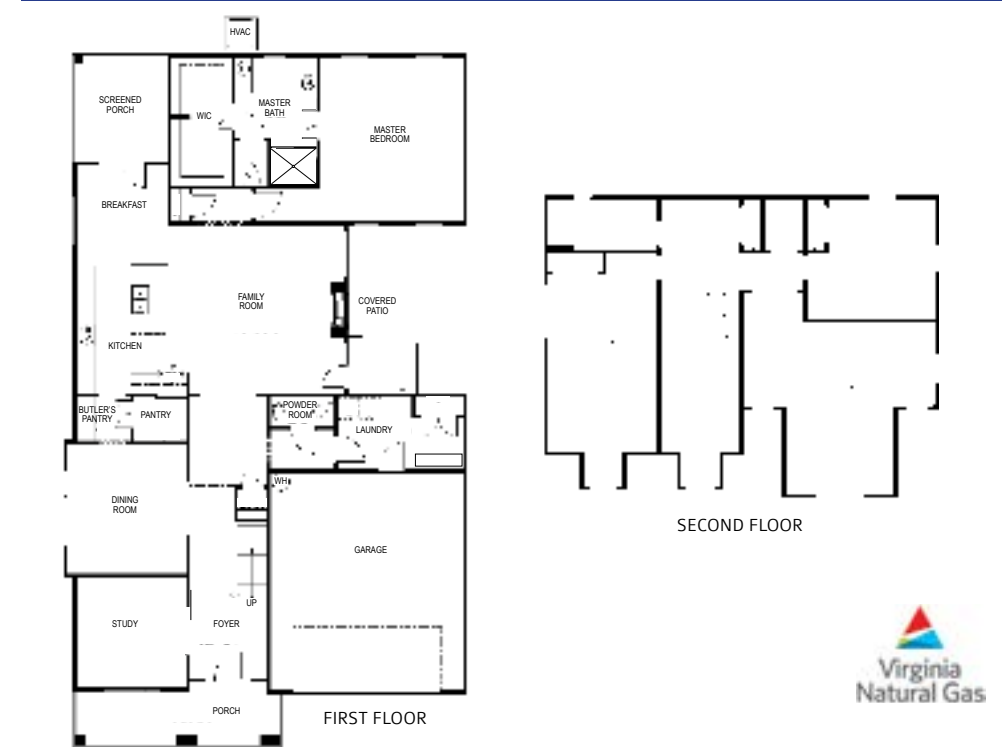
Tour Eagle's home in The Creeks of Nansemond River during Homearama, and be sure to visit all of our homes throughout the Hampton Roads area.



eagleofva.com

The Carlisle House

4



Eagle Construction of VA LLC | (757) 650-5846

At Eagle, we don't just build homes, we build communities that celebrate life's moments by bringing people together and families closer to what matters most.

Since 1984, Eagle has been one of Central Virginia's most trusted builders. Eagle's commitment to excellence is surpassed only by our passion for crafting experiences that transcend construction. Eagle came into the Hampton Roads market in 2005 and is currently building in Central Virginia, Williamsburg, Virginia Beach, Chesapeake, Suffolk, and continues to expand. Eagle is owned by a Richmond-based, Fortune 500 Company, Markel Corporation, which allows our company to grow and to last. With 135 communities and over 6,000 homes built from Central Virginia to Hampton Roads, we've made our mark by continuously delivering on our commitment to excellence and attention to detail... building homes doesn't start with plans, it begins with people.

House Highlights

- 9' ceilings on first and second floor
- All 8' interior and exterior doorways
- Covered raised patio and a breathtaking courtyard complete with a grill
- Raised slab foundation
- Stamped concrete in courtyard area
- See through fireplace from family room to courtyard
- Reclaimed wood throughout home
- Gourmet kitchen with oversized island and 42" cabinets
- Barn door on study
- Designer lighting and plumbing fixtures throughout
- Tankless hot water heater
- Hardwood oak stairs
- Arctic white HardiePlank exterior
- Bronze exterior and bronze interior designer windows

Architectural Design
Eagle Construction of VA LLC

Interior Design
Builders Design

Landscaping
Coastal Landscapes and Nursery (757) 721-4109

Technology
Security Plus (804) 438 2524

Sales
Adrienne Durbin
(757) 589-7981



SENTARA IN WESTERN TIDEWATER

IT'S OUR PRIVILEGE TO SERVE AND CARE FOR OUR COMMUNITIES

Our mission of "improving health every day" isn't exclusive to just the care we provide within our walls. Sentara believes that investing our time, talent and treasure in each of these communities isn't just our obligation, it's our responsibility and our privilege.

Proudly serving Suffolk with:

- Community Health Outreach Program
- Free Breast Screenings
- Free Health Assessments
- Support for the American Cancer Society Relay for Life
- Volunteers for United Way Day of Caring



Learn more at Sentara.com/western Tidewater



Settling Foundation?



Damp Crawl Space?



Sinking Concrete?



IF YOUR HOME HAS THESE PROBLEMS WE HAVE THE SOLUTION.

- ✓ Foundation Repair
- ✓ Basement Waterproofing
- ✓ Crawl Space Encapsulation
- ✓ Concrete Lifting
- ✓ Lifetime Warranties
- ✓ Financing Available



Owned & Operated
by Certified Professional Engineers
www.jeswork.com

**FREE INSPECTIONS
& ESTIMATES!
877-537-9675**

SAVE 10%!*

*When you sign up for your FREE Inspection and estimate at our show booth. Not to be combined with any other offer.

DUTCH BARNS

Since 1973

Custom built barns, gazebos, sheds & playhouses



Pavilion



Gazebo



Chalet



New England Cape Cod



Carriage



Pergola

~ Homearama special ~
Free ramp or work bench

497-7356

124 Pennsylvania Ave., Va Beach • www.vadutchbarns.com

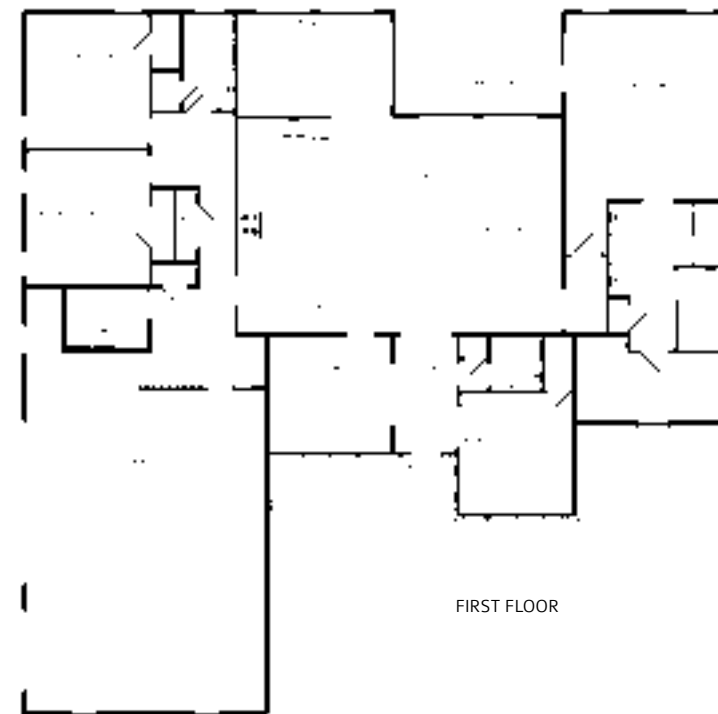
FREE DELIVERY

The Scarlett

5



2,610 sq ft 3 3 3



FIRST FLOOR



Brooks Enterprises, LLC
Kevin Brooks

Kevin is a Class A Builder, licensed in Virginia since 2003. With an impressive resume of quality builds, Kevin's success stems from an unwavering commitment to uphold the highest standards of excellence with every project Brooks Enterprises, LLC is involved with. Kevin has more than 35 years carpentry, construction, renovations, flooring and painting experience. Brooks Enterprises, LLC began as a dream from a Carpenter's Helper in 1978 to the Class A Builder of quality, luxury homes it's known for today.

phone: (757) 718-3478 | website: kevinbrookshomes.com
email: brookska7@aol.com

House Highlights

- Conditioned crawl space
- Multi-zone HVAC
- Tankless water heater
- Outdoor kitchen
- Fire pit
- Paver patio
- Open floor plan
- Gas fireplace
- Large master suite

Architectural Style
Traditional

Architectural Design
Regan McLean

Interior Design
Roomscapes by Teri Zoda,
(757) 871-8313

Furnishings
Havertys

Landscaping
Eric Bailey
(757) 869-4955

Sales
Dawn Crawford Peebles,
RE/MAX Ambassadors
(757) 503-4829

Financing
Tim Mounie, Union Bank
(757) 934-3245

Two Great Companies Offering **One** Exceptional Homebuying Experience!



Visit Chesapeake Homes' website for a complete list of our communities across Hampton Roads!
And, if you are ready to purchase a new home, visit Tidewater Mortgage Services today to pre-qualify online and get the loan process started!



Welcome Home!
cheshomes.com



Tidewater Mortgage
Services, Inc.
TidewaterMortgage.com

Member of the National Automated Clearing House Association

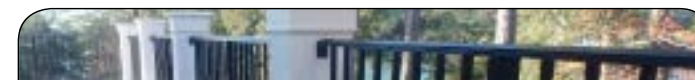


(757) 599-3621

NationalExterminating.com

CALL TODAY FOR YOUR **FREE INSPECTION!**

- Residential Pest Control
- Commercial Pest Control
- Rodent Control Service & Exclusion
- Bed Bug Remediation
- Tick & Mosquito Control
- Trelova Termite Active Guard Stations
- New Construction Termite Pre-Treatment
- Termite Control Warranty
- Understructure Repairs
- Hybrid Controlled Crawl Spaces
- Real Estate Termite & Moisture Letters



Custom built metal railings,
with a powder coated finish.
Exterior and Interior
Please call or email to
schedule an appointment.

757-455-8501

CUSTOM RAILING SOLUTIONS
customrailingsolutions.com
danny@railing.me

**50% OFF
FIRST MONTH RENT!!**



Conveniently
located off I-664
at the Pughsville Rd.
Exit 10

www.harbourviewselfstorage.com

757-638-3600

U-HAUL
3101
Bromay Street
Chesapeake, VA

Ask About Our \$25
Refer A Friend
Program!



Suffolk Sheet Metal.com

*"We take pride in
your family's comfort"*

Air conditioning
& heating

Gas fireplace
installation

Exterior lighting

Generators

Tankless water heater
installation

Water heater service

Electrical



757-539-7484

www.SuffolkSheetMetal.com

309 Granby Street
Suffolk, VA 23434



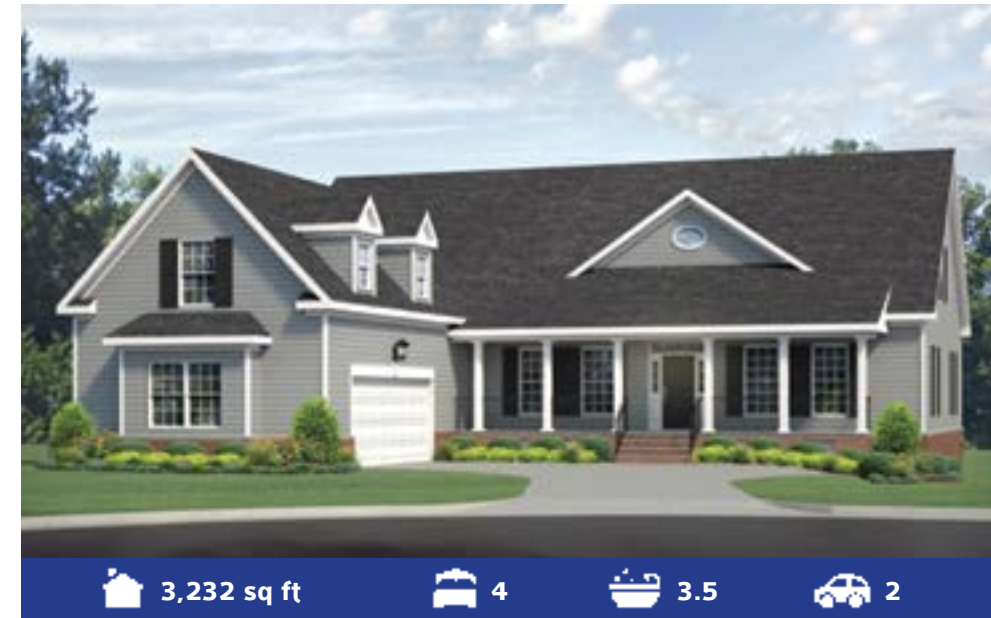
It's not just a heater, it's a partner.

Come visit our site at Homearama 2018



The Lauren

6



3,232 sq ft 4 3.5 2

House Highlights

- Oversized garage
- 9' ceilings on main living area
- White shaker kitchen cabinets & vanities with quartz tops and stainless steel appliances
- Engineered hardwood floors in all public areas
- Ceramic tile floors in bathrooms and laundry room
- Ceramic tile surrounds on tub and master shower
- Built in cabinets in living room
- Gas log fire place in living room
- Large walk in closets in all bed rooms
- High efficiency split zone 2 stage gas furnace for main floor & second floors
- Magnolia Cabinetry, Yan Huang (571) 287-8001

Architectural Style

Ranch

Architectural Design
Black Tip Associates, Inc.
(757) 784-5491

Interior Design
Darmeshia Guyton,
Meme G Home Designs
(757) 673-2684

Furnishings
Haynes Furniture

Landscaping
Brian Almond, Living Images
(757) 236-0781

Technology
John Smith,
Spartan Protect, LLC
(757) 517-3896

Sales
Mike Zimmerman, Remax Ultra
(757) 390-7303

Financing
Rob Beall, Village Bank
(804) 731-1902

From Williamsburg to the Oceanfront, Black Tip Associates is a custom home builder with 15 years in the area and over 100 homes.

Ford's Colony/Westport Spec Homes Available

Lot 26 - 1 ½ Story Ranch
4 Bed, 3 ½ Bath, 2 Car Garage with Workshop
3 ½ Acre Wooded Lot
Starting at \$775,000

Lot 20 - 2 Story Ranch
5 Bed, 3 ½ Bath, 2 Car Over-sized Garage
4 Acre Wooded Lot with Full Walk-out
Starting at \$759,900



Steve Van Kirk
REALTOR®
757-291-3332 stevevankirk@gmail.com



Custom Home Builder
757-784-5491 www.btassoc.net



Susan M. DeMello
Senior Loan Officer, NMLS # 1491977
703-395-9129 Susan.Demello@suntrust.com

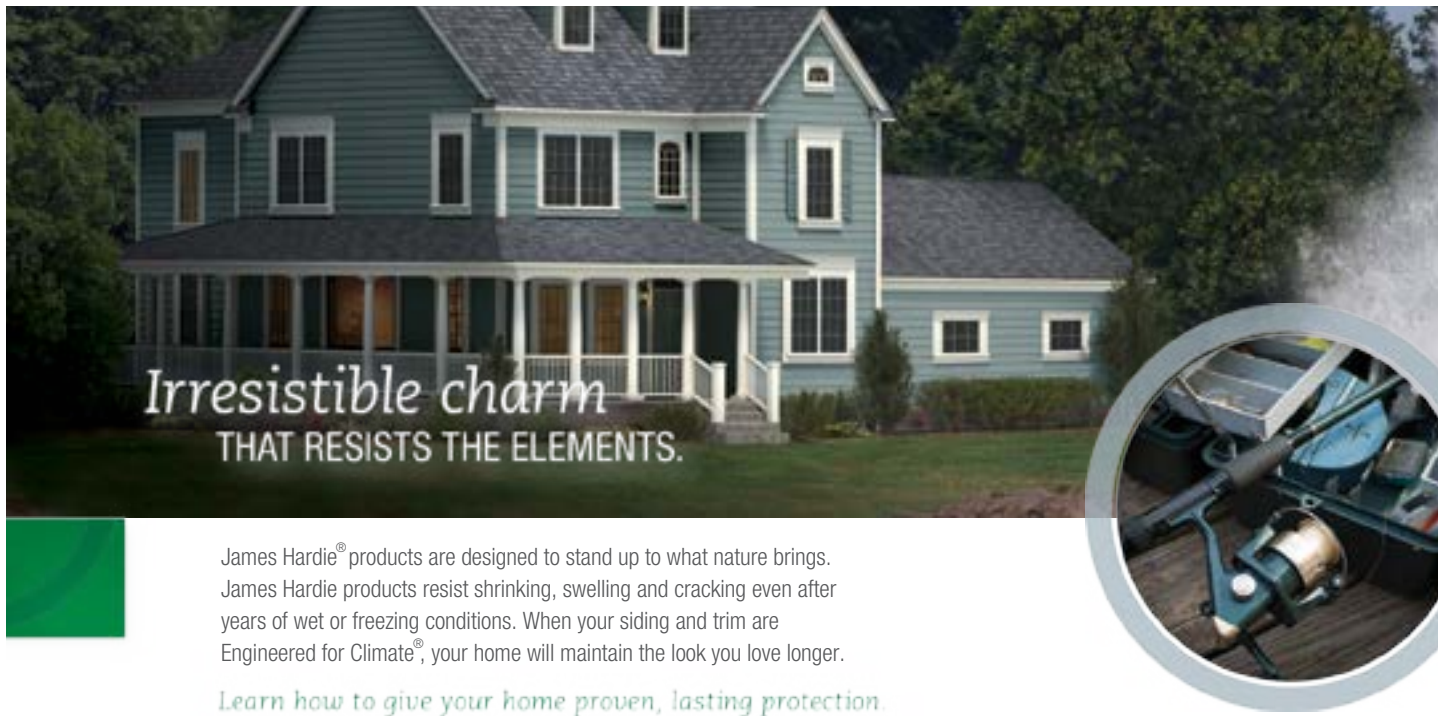


Black Tip Associates

With 75 years of experience between the partners, Black Tip Associates (BTA) was formed in 2013 and has grown quickly. Their services include new homes, renovations and construction management in south side Hampton Roads and Williamsburg. BTA says "our goal is to build a quality home with an enjoyable experience that the customer would be glad to share with their future customers. We not only want to build a great home, but a lasting relationship with all of our customers".

phone: (757) 784-5491 | website: www.btassoc.net
email: info@btassoc.net





Irresistible charm
THAT RESISTS THE ELEMENTS.

James Hardie® products are designed to stand up to what nature brings. James Hardie products resist shrinking, swelling and cracking even after years of wet or freezing conditions. When your siding and trim are Engineered for Climate®, your home will maintain the look you love longer.

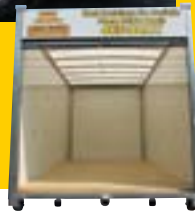
Learn how to give your home proven, lasting protection. Visit jameshardie.com



© 2018 James Hardie Building Products Inc. All Rights Reserved. AD1510-NE-09/18



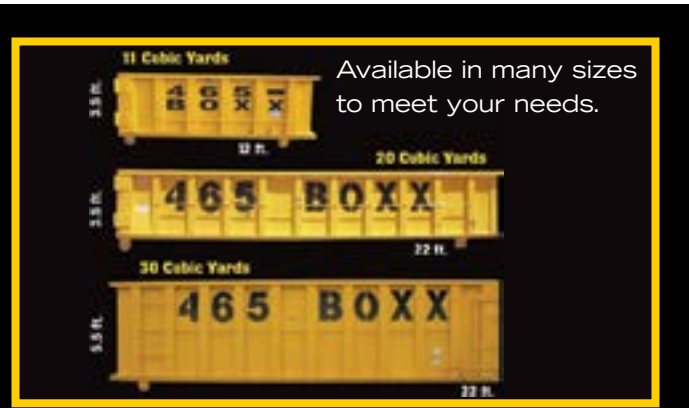
We deliver & pick up
Load at your convenience
Short or long term storage



STORAGE

BOXX SYSTEMS is a locally owned and operated company serving both commercial and residential customers throughout Hampton Roads.

Take the hassle out of waste removal – new construction or renovations. Enjoy the ease of onsite roll-off containers available in four convenient sizes and mobile storage units.



Available in many sizes
to meet your needs.

Roll-off containers for easy removal
Heavy/industrial
Light/residential
Many sizes available

WASTE REMOVAL

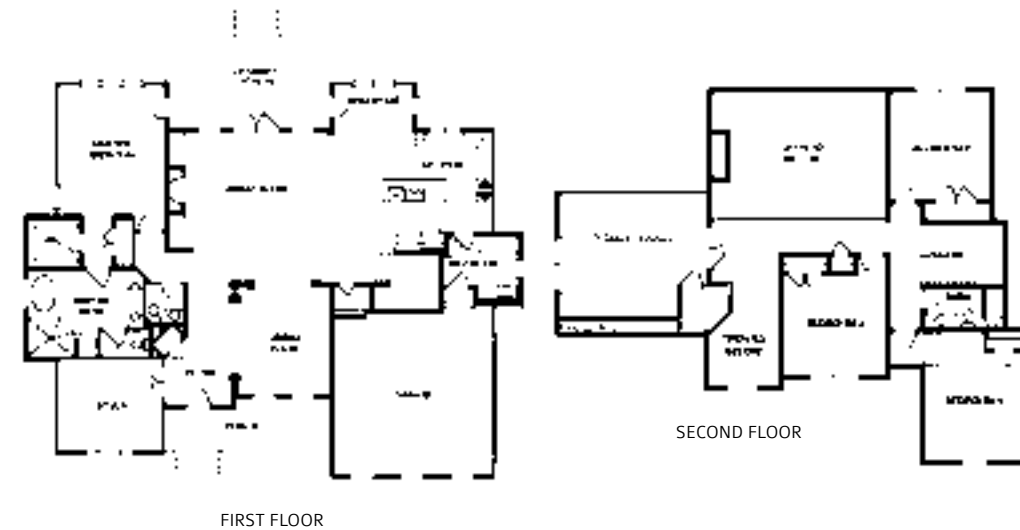


Call us today for your storage or waste removal needs: **757-465-2699** or go to **www.465boxx.com**

The Star Creek House



3,771 sq ft 4+ 2 full 2 1/2 2



Ore Builders, LLC Les Ore & Amy Ore Gwin

Ore Builders, LLC is a family owned business experienced in new construction priced from the mid-200's to 2 million dollar homes, selling between 25-30 homes a year. Ore Builders is experienced, stable, dependable and reliable. Outstanding customer service and a strong sense of teamwork are fundamental to our building process.

phone: (757) 652-2434 | website: www.orebuilders.com
mail: Les.Ore@OreBuilders.com



7

House Highlights

- Master downstairs
- Two story elegant foyer
- Upgraded trim, tile and flooring
- Custom free form in-ground pool provided by Artistic Pools
- Voice command custom window treatments provided by Budget Blinds
- Jenn-Air appliances by Ferguson
- Fencing by Mr. Fence

Architectural Style
Traditional

Architectural Design
Mayfield Designs
(757) 547-2191

Interior Design
Melissa Moon,
Moonscape Properties LLC
(757) 251-8252

Furnishings
Carter Furniture Inc.
(757) 539-3355

Technology
Smart House Automation
by Johns Brothers Security
(757) 852-3300

Audio Wiring
Spartan Pro Tech
(757) 517-3896

Sales
Mike Zimmerman,
RE/MAX ULTRA
(757) 390-7303



GREENBRIER LIGHTING

"TOTAL CONCEPT IN LIGHTING"
The Largest Lighting Selection in Hampton Roads

MONTE CARLO
FEISS

Celebrating our 25th year in business!

Thanks to our customers and builders for their support through the years.

757-547-0293

Mon.-Fri. 9 a.m.-5:30 p.m. | Sat. 9 a.m.-4 p.m. | 816 Eden Way North | Chesapeake, VA

www.greenbrierlighting.com

20% off any one item in stock with ad.
One per household. No other discounts apply. EXPIRES 12/30/18

THE PHOTO'S BEST OF 2018 GOLD CHESAPEAKE

TBA

Real Estate Professionals Appreciation Day

October 19
Noon to 7 p.m.

Free admission* to the show all day.
Hospitality suite will be open from noon to 3 p.m. in the activities tent. Stop by and enjoy champagne cocktails, refreshments, and register to win prizes**.

If you're not able to join us Oct. 19, visit any time the show is open and receive free admission by checking in at Will Call.

*You must show a picture ID and your business card for free admission.
**The prize winners will be drawn October 20 and notified by October 21. Prizes provided by TBA.

Waterfront Community

Elizabeth River
Fishing Piers
Floating Deck
Boat Dock
Walking Trails
Dog Park
Riverview Gazebo

visit: elizabethplace.life

757-504-0952
WIRTH LIVING

ELIZABETH PLACE
A Wirth Living Community

A Chesapeake Boating Community

We are proud to partner with the Elizabeth River Project as the *first* River Star Homes Community.

ADVERTISERS' INDEX			
A Mover	33	Hastings Homes	38
B&T Kitchens & Baths	inside front cover	HAV	21
Bay Disposal	24	James Hardie	36
Black Tip Associates	34	Johns Brothers Security	39
Boxx Systems	36	JES Construction Inc.	29
Budget Blinds	24	Kempsville Building Materials	19
Chesapeake Homes	32	K.M. Cash Remodeling	25
City of Suffolk	9-11	Nansemond Pre-Cast Concrete	back cover
Coastal Door Installations Co.	25	National Exterminating	33
Custom Railing	33	Obici House	38
Dollar Bank	22	ReMaxx/Ultra	14-15
Dutch Barns	30	RSVP	22
Eagle Construction of VA LLC	28	Sasser	40-41
Exotic Home Coastal Outlet	7	Sentara	16, 28, 42
Ferguson Bath, Kitchen & Lighting Gallery	1	Spivey Rentals & Safety	44
First Team Auto Group	12	Suffolk Sheet Metal	33
Floor & Decor	43	Terry Peterson	5
Garage Monkey	inside back cover	TowneBank	3
Greenbrier Lighting	38	Trane	18
Habitat for Humanity	25	Virginia Natural Gas	20
Harbour View Self Storage	33	Wirth Living	39

www.HastingsHomes.com

hastings HOMES

BUILDING AFFORDABLE HOMES IN COASTAL VIRGINIA

New Construction Available Now Under \$286,000
Liz Livernois, Rose & Womble Realty
757-348-0032 | lizlivernois@roseandwomble.com

The Obici House

AT SLEEPY HOLE GOLF COURSE

LOCALS CHOICE 2015

RESTAURANT | PRIVATE EVENTS
757-617-1299 | www.theobicihouse.com

"Alexa, where can I find the latest Smart Home Technology at Homearama?"

Visit us at Booth #10

Homearama Exclusive Offer
6 Months Free Monitoring

*Must show Homearama Plan Book magazine ad to redeem offer. Valid only for new customers. Limit one per customer. Certain restrictions may apply. Call for details.

JOHNS BROTHERS SECURITY™

757-852-3300 // johnsbrotherssecurity.com

DCJS #11-1918 | NC #1368 CSA | NC #2447 CSA

ALARM.COM Your Authorized Alarm.com Partner.

Proudly protecting our neighbors in Hampton Roads, Richmond, and The Outer Banks since 1974.

Introducing Two New Communities

WHERE EVERYDAY'S A VACAY

Award winning homearama builder, Sasser Construction, invites you to visit our three waterfront communities during this years tour.

The Landings AT BENNETT'S CREEK

Waterfront community in the heart of Northern Suffolk next to Decoy's restaurant featuring beautiful sunset views, pool and community pier

Martin's POINT

Our newest waterfront community located at the end of Bruce road along the western branch of the Elizabeth river, featuring a community pier, walking trail and popular WB schools



The Waterfront at Parkside is now offering affordable waterfront lots and two move-in ready homes. Bring your family by for a tour of our fully furnished, simply custom, move-in ready homes.



The 2018 Homearama is being held on weekends only. (Friday-Sunday) Starting October 19th – November 4th.

Call today to schedule a tour of our properties with a view!

3200 Tyre Neck Road, Suite 203
Portsmouth, VA 23703

(757) 484-6075 | Office
(757) 434-8676 | Sales
(757) 686-4600 | Fax
www.sasserhomes.com



VISIT OUR FULLY FURNISHED MOVE-IN READY HOMES TODAY



1922 Piedmont Road
3 Bedrooms
2.5 Baths plus bonus room. A spacious home and great back porch for entertaining. Kitchen and dining area open to great room.
\$415,900

Attention all VA Buyers, Move in for 0% down! Ask for details!

AFFORDABLE WATERFRONT LOTS AVAILABLE NOW

1918 Piedmont Road
3 Bedrooms/2 Baths.
Ranch plan, vaulted great room and screened in porch, master has two walk-in closets and many extras throughout.
\$399,900

COMMUNITY AMENITIES

- Clubhouse with Junior Olympic Pool
- 24 hr. access to fitness center on site
- 50 Acre Park Includes 3 Boat Ramps, Fishing Pier, Covered Shelters, Tennis, Disc Golf, Skate Park, Dog Park, Restrooms and More.



CONTACT US

Lynn Niemi: (757)724-9178
Sales Office: (757) 483-4908

thewaterfront@bhhstowne.com

www.thewaterfrontatparkside.com



— OPTIMA MEDICARE HMO

Thinking about your
2019 Medicare plan?

OptimaHealth 



Join us! Meet your neighbors and
learn about Medicare.

Optima Medicare hosts
community meetings where you
can ask questions and learn the
basics in a group setting.

Call to RSVP: 1-800-668-1334

8 a.m. - 8 p.m. | Mon-Sun | TTY: 711
www.optimahealth.com/medicare

Suffolk Community Meeting Schedule

10/23/2018 9:30 a.m.
Sentara Obici Hospital
Room A, B
2800 Godwin Blvd

11/9/2018 10:30 a.m.
Sentara BelleHarbour
3rd Floor Conference Room
3920 Bridge Rd

11/30/2018 9:30 a.m.
Sentara Obici Hospital
Room A, B
2800 Godwin Blvd

A sales person will be present at the Community Meetings with information and applications. For accommodations for persons with special needs at sales meetings, call toll-free 800-668-1334 or TTY Call 711, 8 a.m. – 8 p.m., Mon – Sun.

Optima Medicare is an HMO with a Medicare contract. Enrollment in Optima Medicare depends on contract renewal.

Optima Medicare complies with applicable Federal civil rights laws and does not discriminate on the basis of race, color, national origin, age, disability, or sex.

ATENCIÓN: Si habla español, existen servicios de asistencia de idiomas disponibles para usted sin cargo. Llame al 1-855-687-6260.

주의: 한국어를 사용하실 경우, 언어 지원 서비스를 무료로 이용하실 수 있습니다. 855-687-6260 번으로 전화해 주십시오.

H2563_SEN_2019_HMAD_C



FLOOR & DECOR
TILE • WOOD • STONE

flooranddecor.com

At Floor & Decor you'll find the latest trends in hardwood. From high variation to wide width planks, you'll find thousands of styles for any budget. Stop by today and ask about our free Design Services!

HAMPTON 2053 EXECUTIVE DR | 757-243-4893

VIRGINIA BEACH 312 CONSTITUTION DR | 757-364-6756

© 2018 Floor & Decor



Since 1969, Spivey Rentals has provided Superior Service and Products to our customers



Portable Restrooms

Roll-Off Containers

Traffic Control

Special Events

Recycling

Safety Sales

Crash Trucks

Traffic Signs

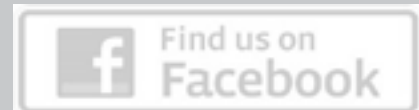
Message Boards

Shower Trailers

Restroom Trailers

Barricades

FEEL FREE TO GIVE US A CALL 757.485.8888
OR YOU CAN VISIT US www.spiveyrentals.com



SHELVING // CABINETS // FLOORING // OVERHEAD STORAGE



A PLACE FOR EVERYTHING

- Beautiful Epoxy & Polyurea Flooring
- Premier Quality Garage Cabinets
- Strong Dual Purpose Shelves & Racks
- Tool Storage, Work Benches & Slat Walls
- Solutions for Bikes, Boards, Kayaks & More



Garage Monkey, LLC

757.330.5285

www.GarageStorageVirginiaBeach.com

Locally Owned & Operated
BEST Warranty // BEST Quality // BEST Service



The Area's Largest
Premier Techo-Bloc Distributor



Outdoor Living at its Best



We welcome you to visit our display at our office.
Call Scott Porter at 757-651-7739



NPCC
NANSEMOND PRE-CAST CONCRETE CO., INC.
HARDSCAPE DIVISION

YOUR SOURCE FOR HIGH END
PAVING STONES & OUTDOOR GRILLS



10% OFF

Any Purchase Over \$1,000 MSRP

One coupon per customer. Not valid with any other discount. No cash value. Excludes fire sale material. Excludes tax and delivery charges. Expires 12/31/18.

3737 Nansemond Parkway | Suffolk, VA | 757-538-2761 | www.nansemondprecast.com