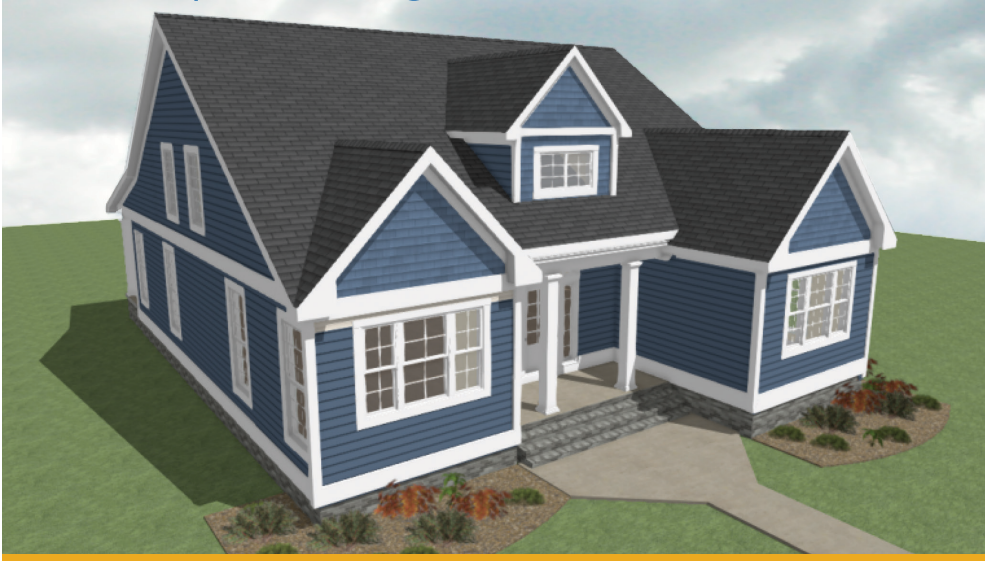


# Chesapeake Regional Healthcare House

5



2,400 sq ft



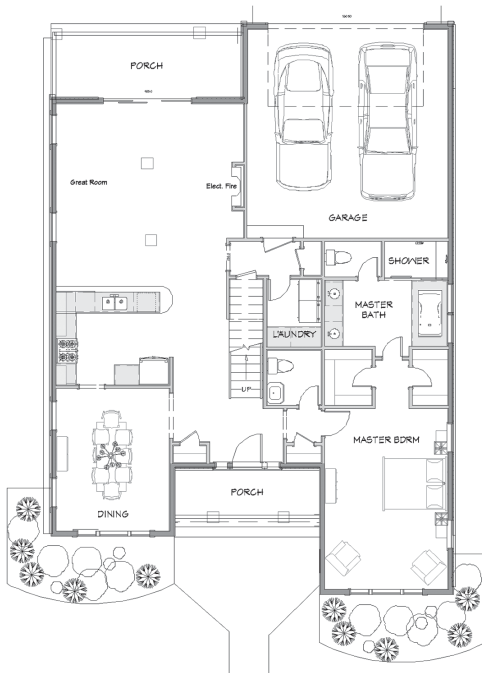
3-4



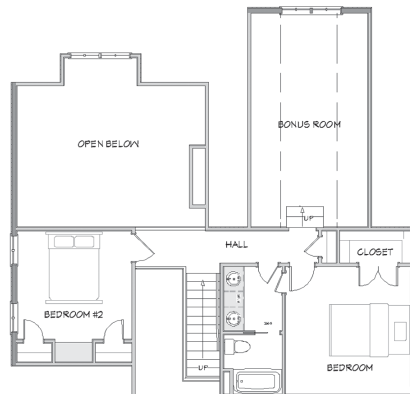
2.5



2



FIRST FLOOR



SECOND FLOOR

## House Highlights

- 8' interior and exterior doors
- Impressive foyer with vaulted ceilings
- 10-16ft. first floor ceilings
- Commercial appliances
- Pella windows and doors
- Large chandeliers adorn traditional and nontraditional rooms
- Expansive kitchen with large island
- Inviting master suite
- Covered patios on the front and back

## Architectural Style

Transitional

## Architectural Design

Donald Gardner

## Interior Design & Furnishings

Jack Schoch of JF Schoch Building Corp.

## Landscaping:

Coastal Landscapes,  
Tom Underhill  
757-721-4109

## Sales

Atlantic Sotheby's  
International Realty,  
Jack Schoch 757-724-8900

## Financing

Old Point National Bank,  
Ed Hentges  
757-805-2341



## JF Schoch Building Corp. | 757-724-8900

Jack Schoch of JF Schoch Building Corp. in Virginia Beach has built showcase homes in 15 previous Homearamas and several commercial buildings.

Schoch's 26 years of building experience and quality workmanship combine to bring dream homes to life. Each Schoch home displays Jack's talent for perfection and craftsmanship. There are close to 300 JF Schoch homes in the Hampton Roads area, ranging from \$200k to more than \$4 million.

website: [www.jfschoch.com](http://www.jfschoch.com)

