

# Grayton Downes TBA Scholarship House

Benefits the Tidewater Builders Association Scholarship Fund  
Sponsored by Kempsville Building Materials



4

## House Highlights

- Open floor plan
- Rear loading attached garage
- Lots of built-ins and a custom closet by The Closet Factory
- Covered porch for outdoor living with remote controlled screen
- Smart wiring technology
- Tankless water heater
- Maintenance-free exterior

🏠 2,400 sq ft    🛏️ 4    🛁 3.5    🚗 2

**Architectural Style**  
Cottage

**Architectural Design**  
Mayfield Designs,  
Frank Betz Associates  
757-547-2191

**Interior Design**  
Gilbert Interiors,  
Beth Gilbert 757-464-6408

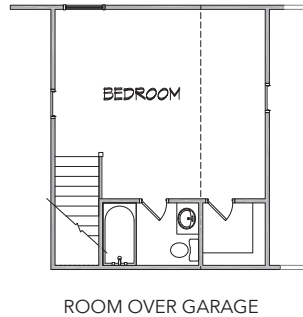
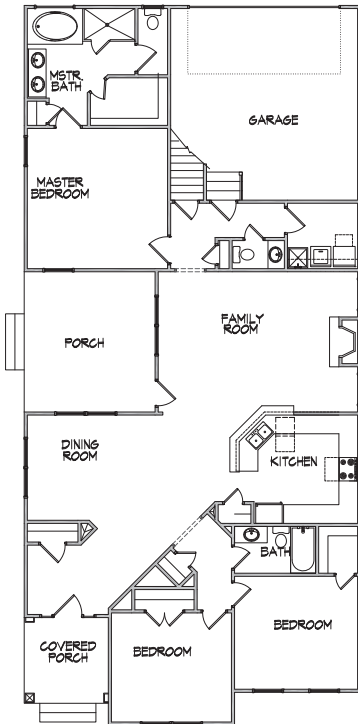
**Furnishings**  
Value City Furniture,  
Stein Mart,  
Mark Gonsenhauser's Rugs  
and Carpets

**Landscaping**  
Miller's Landscaping  
757-488-6086

**Technology**  
Home Theater by Masters  
(HTM) 757-482-8072

**Sales**  
RE/MAX Allegiance,  
Patty Cohen 757-647-6575

**Financing**  
Kempsville Building  
Materials/Carter Lumber  
757-482-0782



FIRST FLOOR



### Joey Corporation | 757-482-9578

Sam Cohen of Joey Corporation has been building in Tidewater Builders Association's Homearama Home Show since 1997. His entries have included homes from 3500 sq ft to over 10,000 sq ft. Sam is known for his attention to detail and hands on approach. This entry was in partnership with Kempsville Building Materials/Carter Lumber to benefit Tidewater Builders Association Scholarship Fund to help future college applicants achieve their dream of an education. Thanks to Scott Gandy and Kempsville Building Materials for making this possible.

website: [www.joeycorp.com](http://www.joeycorp.com)

